



Radiance™ E-0.25

Attic Barrier | Product Overview

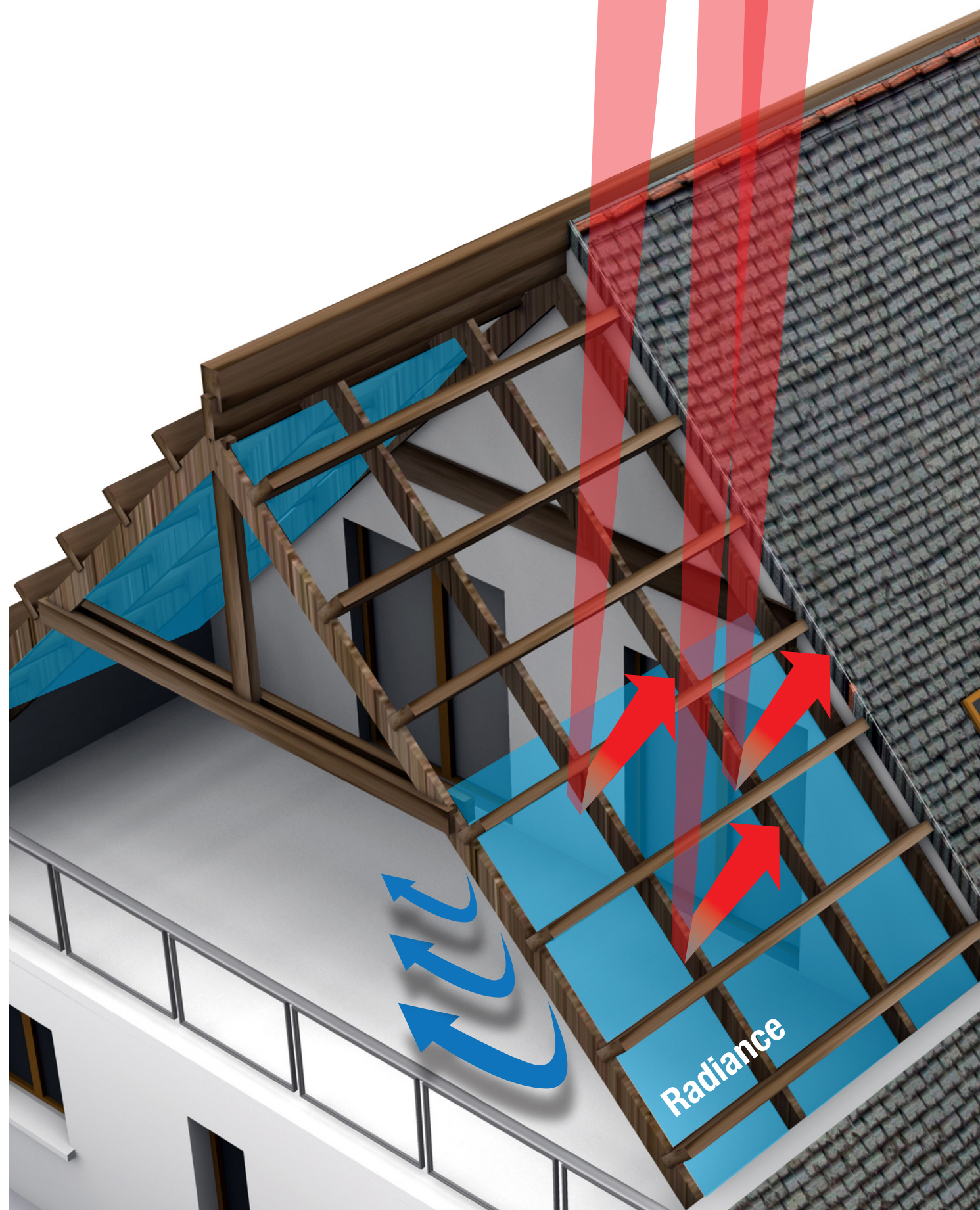
Customer Service 800.433.9517
Technical Service 800.243.6739
www.BuildingSystems.basf.com

BASF Corporation | Building Systems
889 Valley Park Drive
Shakopee, Minnesota 55379

BASF Corporation | Building Systems
889 Valley Park Drive
Shakopee, Minnesota 55379

www.BuildingSystems.BASF.com
Customer Service 800.433.9517
Technical Service 800.243.6739

LIMITED WARRANTY NOTICE: Every reasonable effort is made to apply BASF exacting standards both in the manufacture of our products and in the information which we issue concerning these products and their use. We warrant our products to be of good quality and will replace or, at our election, refund the purchase price of any products proved defective. Satisfactory results depend not only upon quality products, but also upon many factors beyond our control. Therefore, except for such replacement or refund, BASF MAKES NO WARRANTY OR GUARANTEE, EXPRESS OR IMPLIED, INCLUDING WARRANTIES OF FITNESS FOR A PARTICULAR PURPOSE OR MERCHANTABILITY, RESPECTING ITS PRODUCTS, and BASF shall have no other liability with respect thereto. Any claim regarding product defect must be received in writing within one (1) year from the date of shipment. No claim will be considered without such written notice or after the specified time interval. User shall determine the suitability of the products for the intended use and assume all risks and liability in connection therewith. Any authorized change in the printed recommendations concerning the use of our products must bear the signature of the BASF Technical Manager. This information and all further technical advice are based on BASF's present knowledge and experience. However, BASF assumes no liability for providing such information and advice including the extent to which such information and advice may relate to existing third party intellectual property rights, especially patent rights. In particular, BASF disclaims all WARRANTIES, WHETHER EXPRESS OR IMPLIED, INCLUDING THE IMPLIED WARRANTIES OF FITNESS FOR A PARTICULAR PURPOSE OR MERCHANTABILITY. BASF SHALL NOT BE RESPONSIBLE FOR CONSEQUENTIAL, INDIRECT OR INCIDENTAL DAMAGES (INCLUDING LOSS OF PROFITS) OF ANY KIND. BASF reserves the right to make any changes according to technological progress or further developments. It is the customer's responsibility and obligation to carefully inspect and test any incoming goods. Performance of the product(s) described herein should be verified by testing and carried out only by qualified experts. It is the sole responsibility of the customer to carry out and arrange for any such testing. Reference to trade names used by other companies is neither a recommendation, nor an endorsement of any product and does not imply that similar products could not be used.



Radiance™ E-0.25

Attic Barrier | Product Overview

Offer your customer a unique product solution while generating additional income for you.

Need to add value to your services?

At BASF, we can help.

Radiance™ E-0.25 is quick and easy to apply, simply creating a complete package for your customers. BASF's radiant barrier coating provides value to homeowners by reducing energy costs and increasing occupant comfort.

Using a spray applied barrier, like Radiance™, provides a number of cost benefits over other types of radiant barriers. The low material cost and ease of application reduces labor. Radiance™ can be applied easily without the complexity of navigating difficult-to-access attic spaces.

How does Radiance™ work?

Radiance™ E-0.25 is a low-e barrier applied to the underside of roof decks. When applied as a thin, even coat, it creates an effective barrier that stops potential radiant heat transfer.

On hot summer days, the sun transfers its heat to the roof exterior, which seeks the cool interior of the home. The roof heat is transferred as radiant energy from the underside of the untreated roof deck and down to the ceiling insulation. The insulation may initially resist much of the heat, but it will inevitably transfer down increasing the temperature of the living space of a home.

What Radiance™ can do for you?

The addition of Radiance™ E-0.25 to your projects will provide you with a competitive edge, increasing your profits by expanding your product offering and creating a package solution. Radiance™ can quickly be applied by spray, roller or brush for, 100% seamless coverage in a single coat.

What Radiance™ can do for your customer?

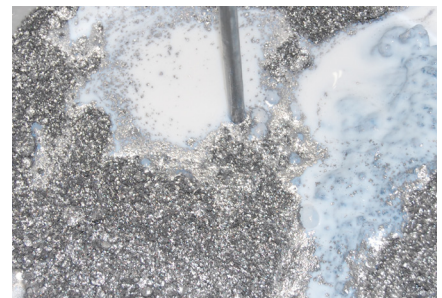
Radiance™ E-0.25 will effectively cut the amount of radiant heat entering the attic area through the roof deck. At least 77% less radiant energy entering the attic means less heat in the living space. BASF's Radiant coating also keeps attic-mounted HVAC ducts cooler, so when the air conditioning runs, it doesn't have to work as hard to cool the ducts along the living space. The less work the AC unit has to do, the more money your homeowner will save on cooling costs.

What you need to get started

- Airless paint sprayer with a flow rate of at least ¼ gallons per minute and 2,000 psi
- A dedicated hose and gun for Radiance™ due to the difference in its physical properties and chemistry from any other paint or coating
- A spray tip size .019" or .021"
- A face respirator, goggles and coveralls to protect the applicator from overspray

Working with BASF The Chemical Company

Radiance™ E-0.25 is manufactured by BASF, which has over a century of experience in paints, coatings and sealants. BASF is the world's leading chemical company, with more than 100,000 employees and close to 330 production sites worldwide BASF serves customers and partners in every corner of the world. BASF is helping customers to be more successful through intelligent system solutions and high-quality products.



Please refer to Radiance™ Data Guide and MSDS for complete safety and technical information
Online at www.BuildingSystems.basf.com/radiance